



USB7210 USB-SSI Converter Module

Driver Installation Guide

Table of Contents

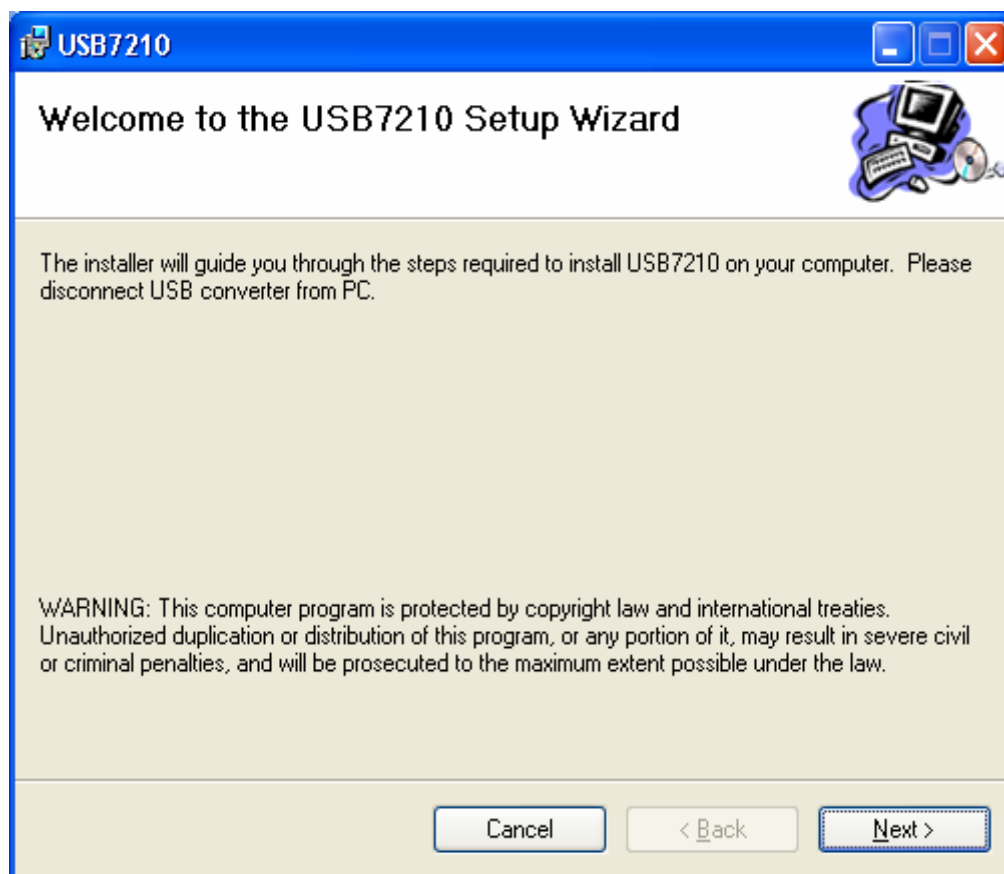
USB7210 USB-SSI Converter Installation Instructions	3
Step One – Setup Wizard.....	3
Step Two – Select Installation Folder	4
Step Three – Confirm Installation.....	5
Step Four – USB Installation Status	6
Step Five – USB Installation Complete	7
Step Six – Plug in USB7210.....	8
Step Seven – Hardware Wizard Status	9
Step Eight – Installing USB7210 Driver	10
Step Nine – USB Serial Port Found.....	11
Step Ten – USB Serial Port Driver	12
Step Eleven – Hardware Wizard Complete	13
Step Twelve – Validate Driver	14
Step Thirteen – (Optional) Change COM Port	15

USB7210 USB-SSI Converter Installation Instructions

This document contains the installation and un-installation process for the USB7210 USB-SSI Converter driver for Windows XP and Windows 2000.

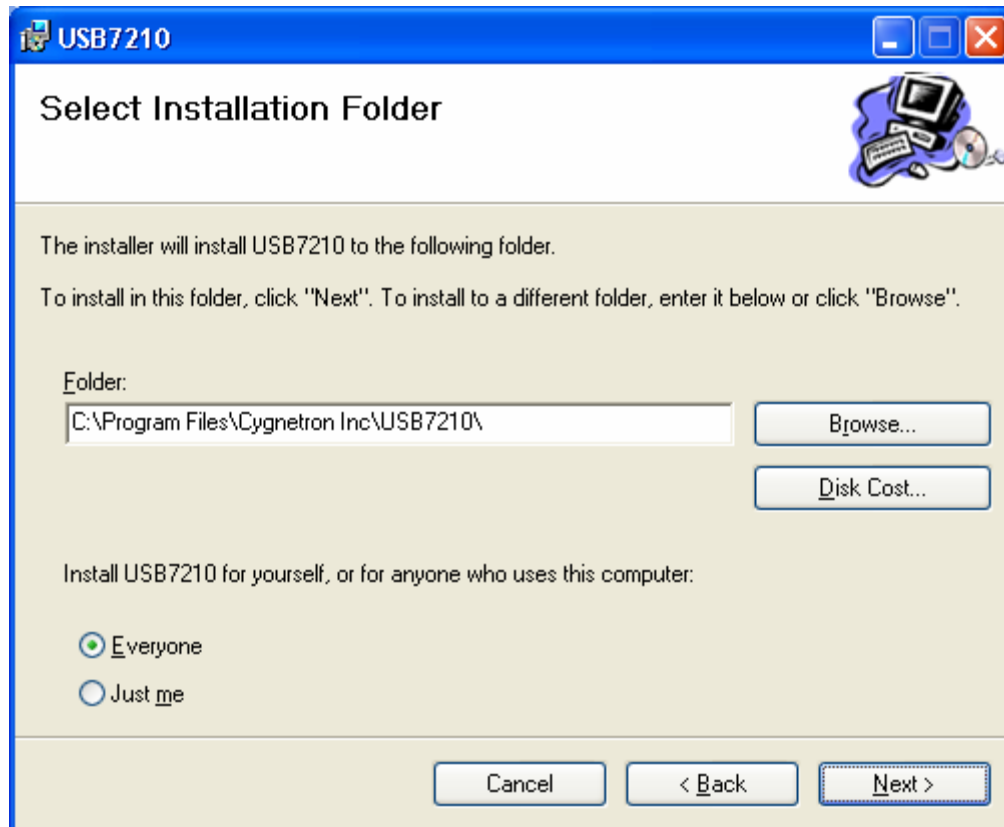
Step One – Setup Wizard

Verify the USB7210 is not connected to the PC. To install the driver double-click USB7210.msi, found on the installation CD. This is a Windows based installer. The following screen will be displayed. Select Next>.



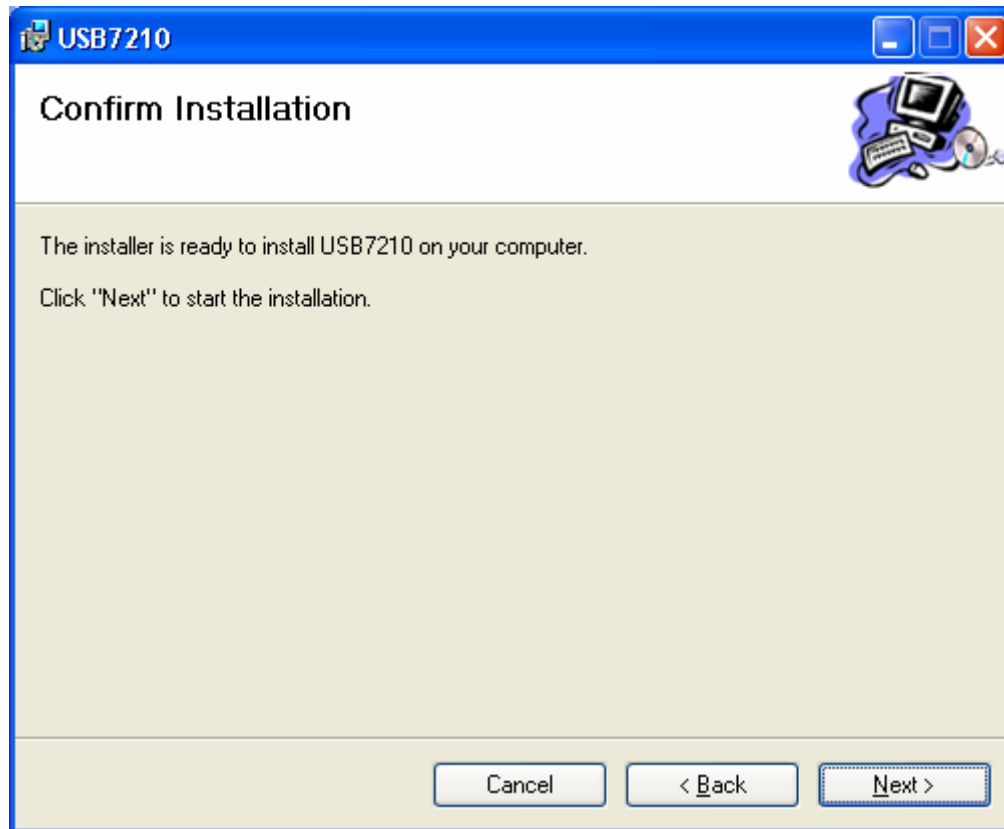
Step Two – Select Installation Folder

The following screen will appear. Select Next>. The drivers will be copied into the Windows default directories. The un-installer is also copied into the default folder below.



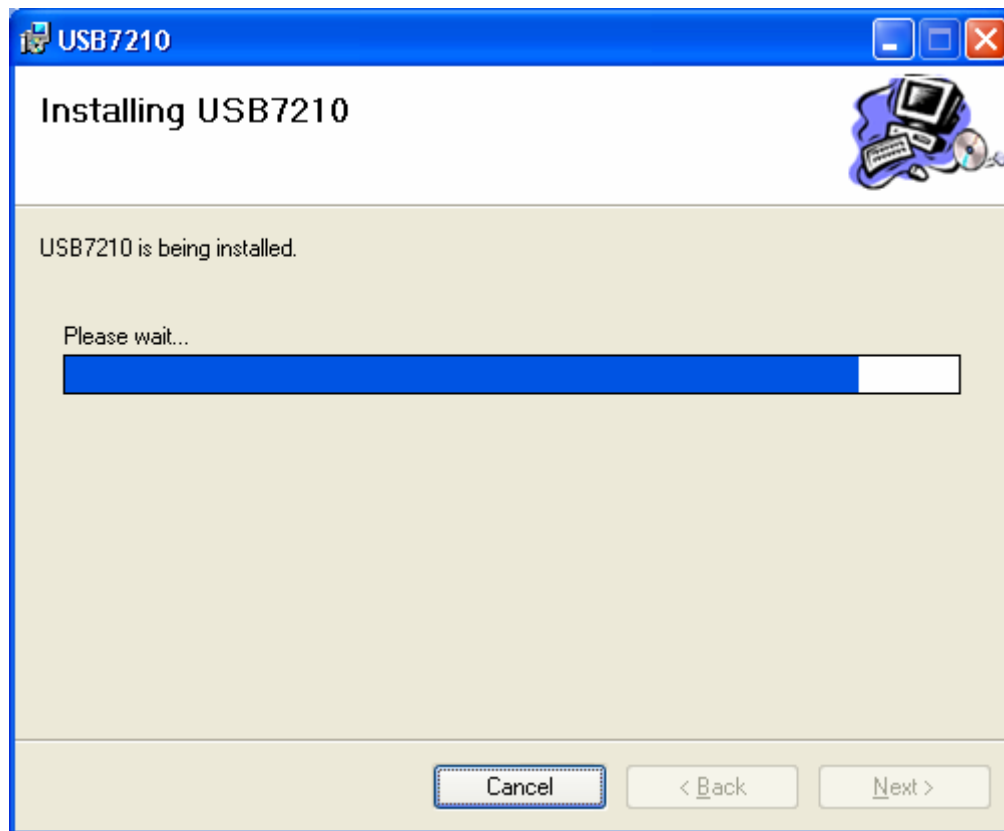
Step Three – Confirm Installation

The following screen will appear. Select Next>.



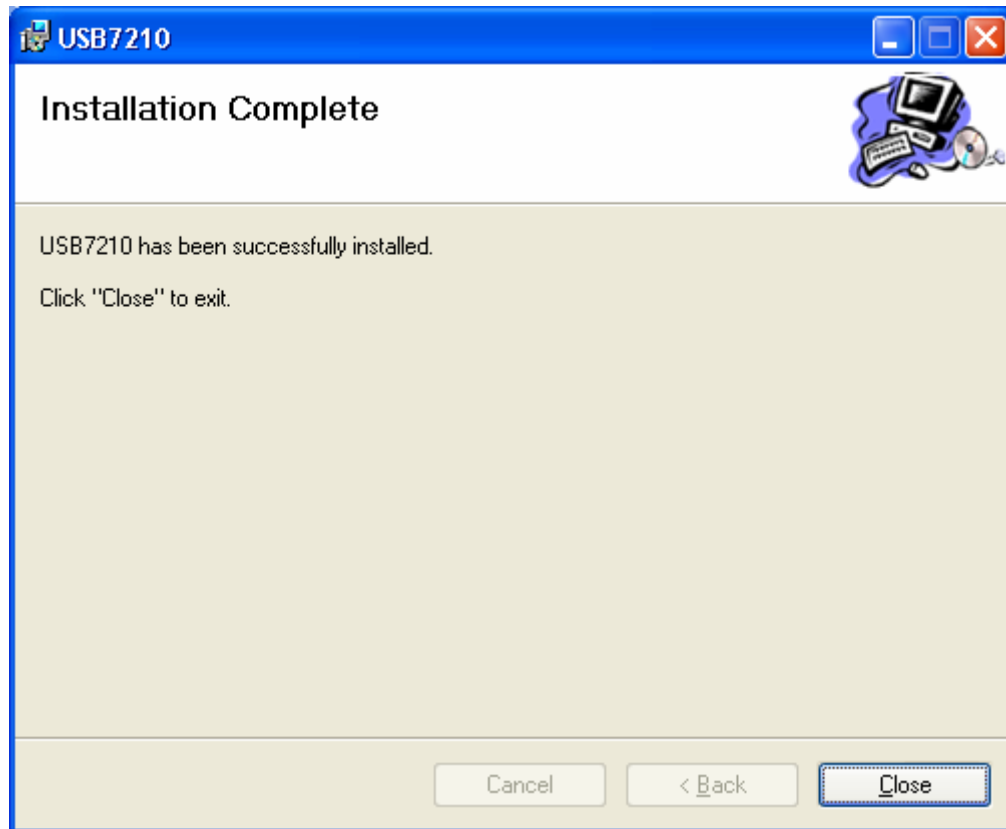
Step Four – USB Installation Status

The following screen will appear. This is the status of the install.



Step Five – USB Installation Complete

The following screen will appear. The drivers and un-installer are finished copying.



Step Six – Plug in USB7210

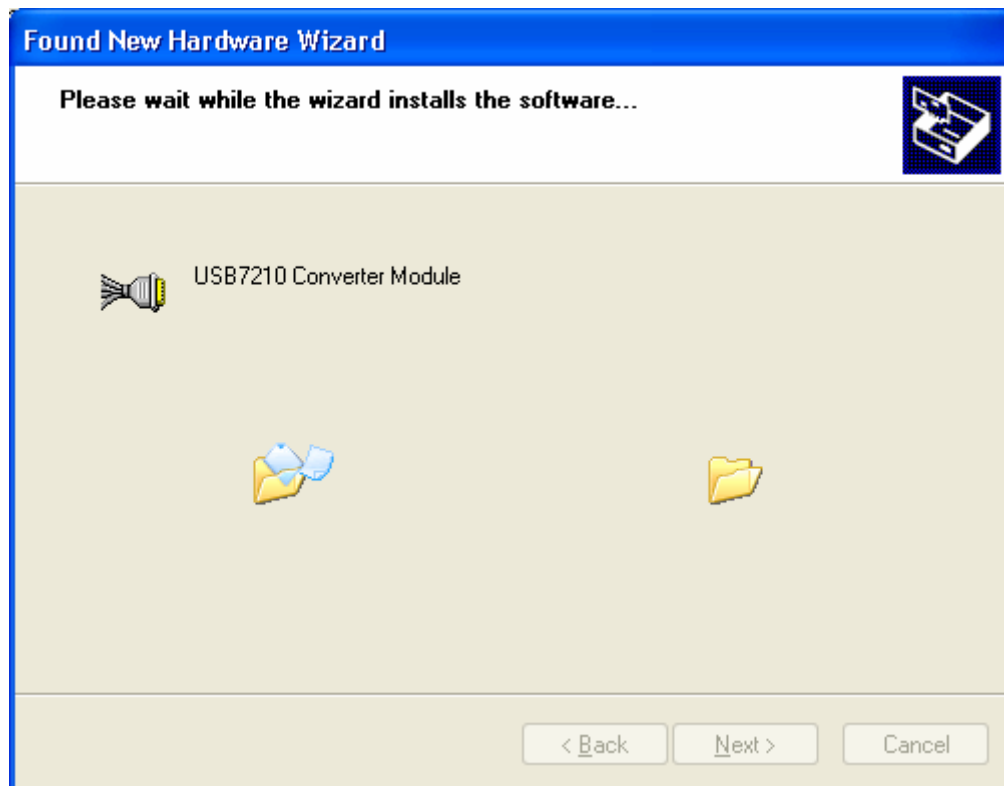
Plug in the USB7210 SSI Converter into the USB port of your choice, if you already plugged the Converter in you may unplug and re-plug the Converter into the USB port. This will cause the Windows Hardware Wizard installation to start and the following screen will appear. If the screen does not appear unplug Converter from USB port and reboot the PC. After the PC has completed reboot, plug in the Converter into the USB port of your choice.

The following screen will appear. Select Next>.



Step Seven – Hardware Wizard Status

This is a status screen installing the driver.



Step Eight – Installing USB7210 Driver

Once the Converter is found the driver is installed and the following screen appears. Select the Continue Anyway button.



Step Nine – USB Serial Port Found

Once the converter driver is installed the USB Serial port driver will install. Select Next>.



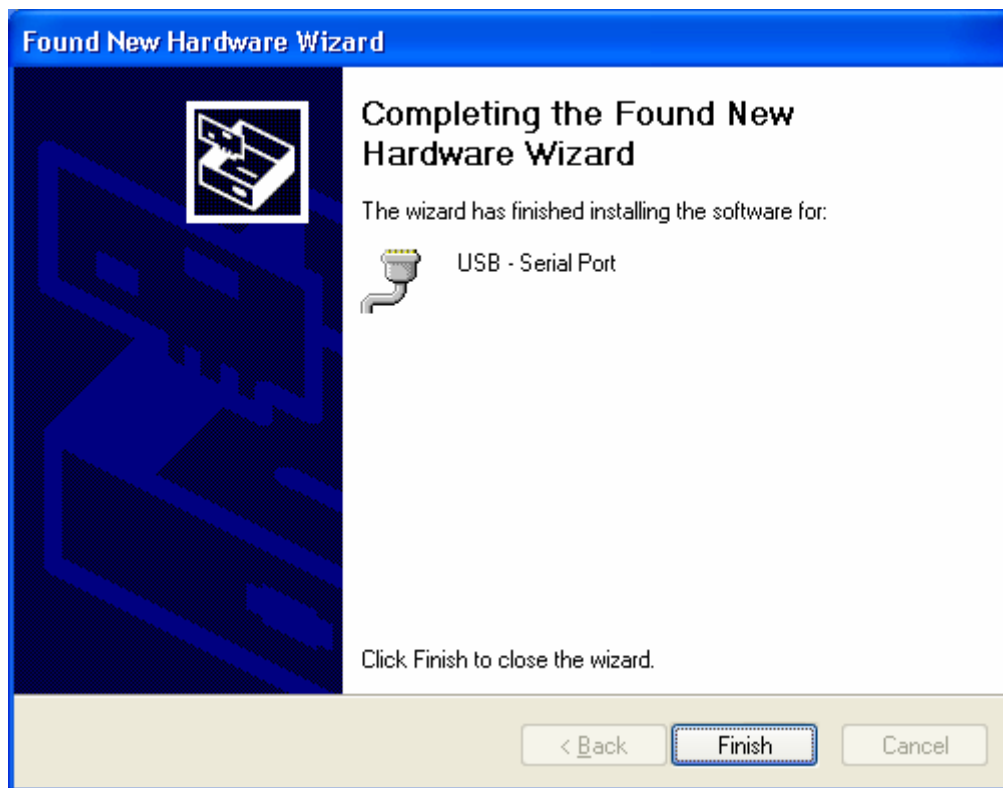
Step Ten – USB Serial Port Driver

The following screen will appear. Select the Continue Anyway button.



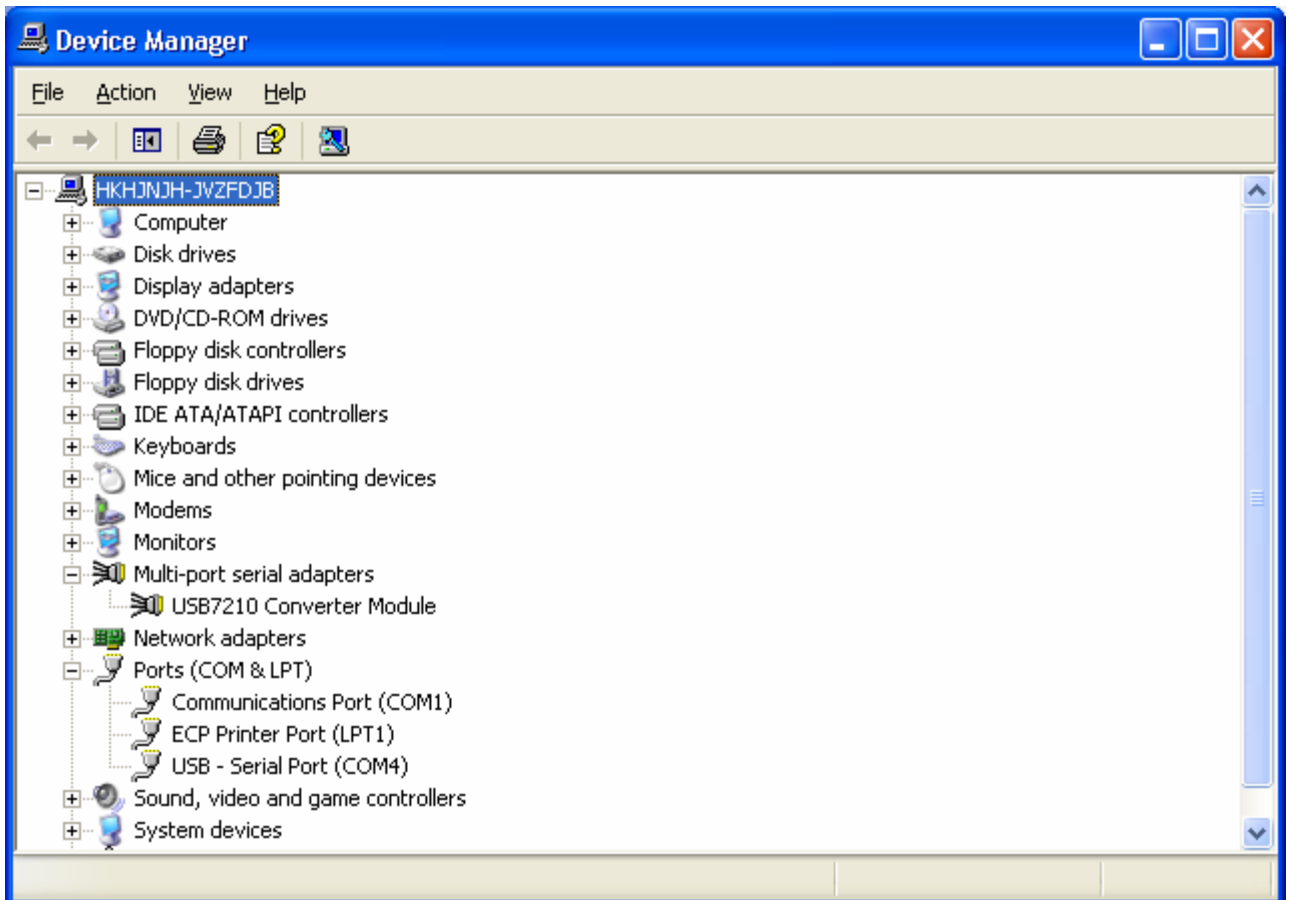
Step Eleven – Hardware Wizard Complete

After the driver is installed the follow screen appears, indicating the installation is complete and the USB7210 SSI Converter Module is ready to use.



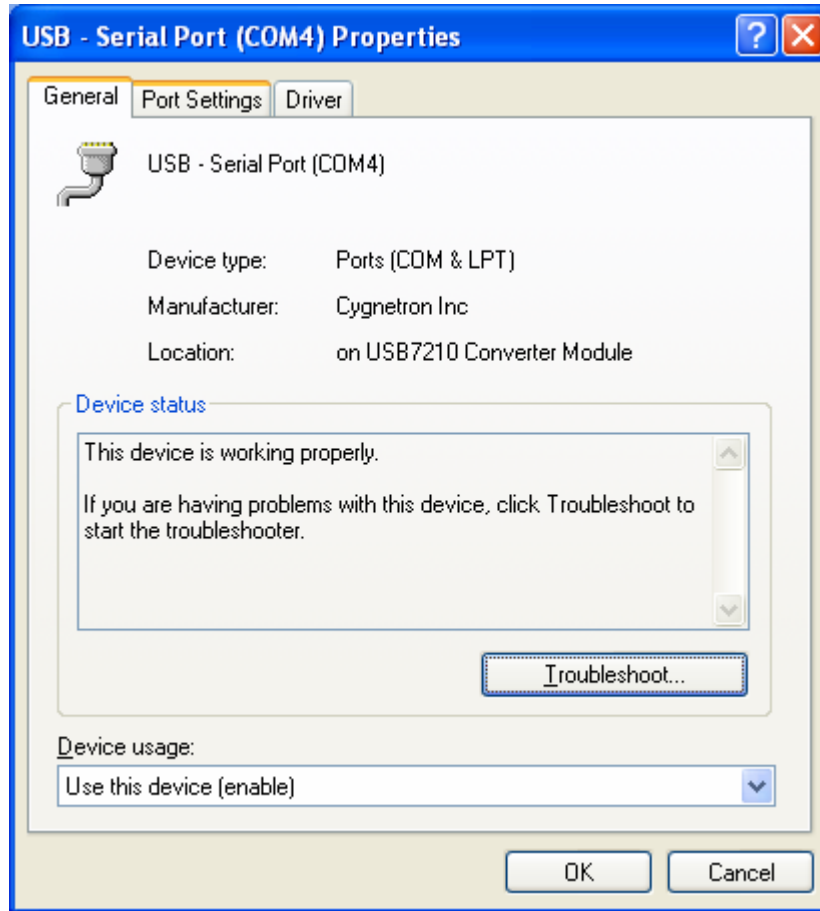
Step Twelve – Validate Driver

To validate the driver is installed, use the Device Manager, under Multi-port serial adapters; the USB7210 Converter Module should be displayed. Also, an additional serial port appears called USB – Serial Port.

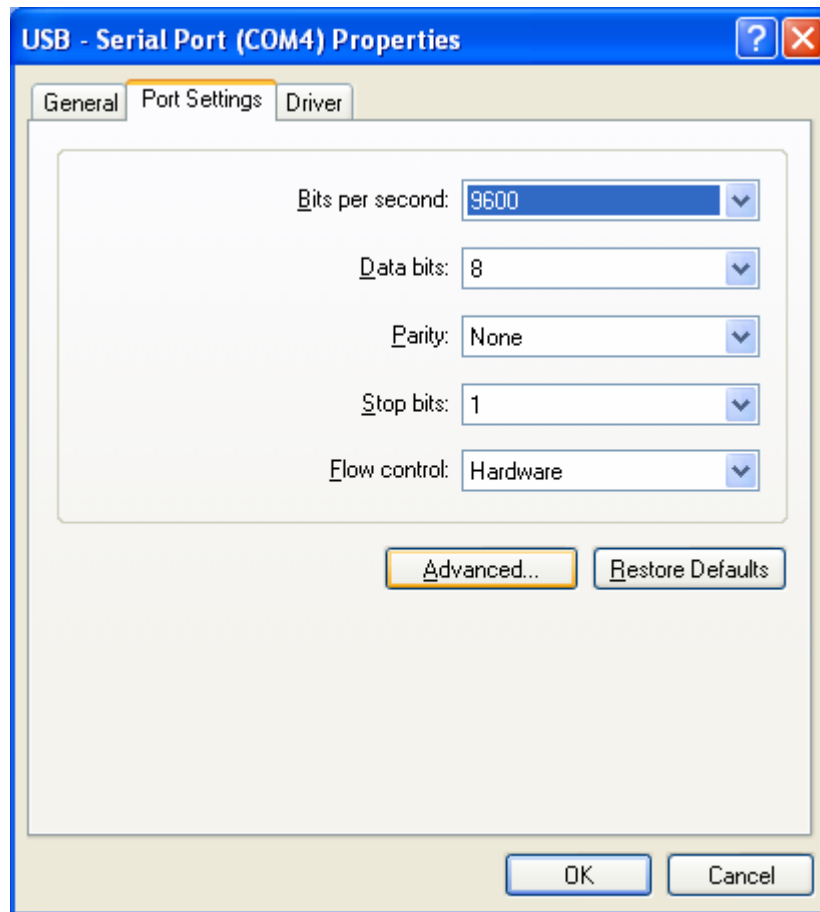


Step Thirteen – (Optional) Change COM Port

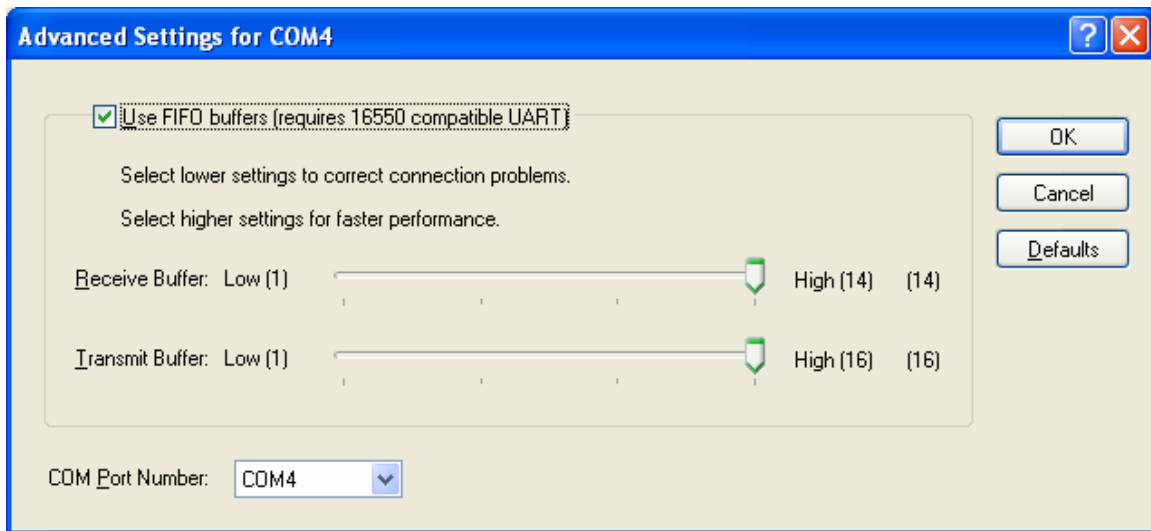
The next available COM port is assigned to the USB7210. If USB - Serial Com port number chosen is not suitable for your application, it may be changed to an alternate port by hovering the mouse over the USB – Serial Port, Right-clicking, and choosing Properties.



Select the Port Settings Tab then click on the Advanced button.



Choose the desired new port number (make sure it is not being used) and click OK.



The image shows a Windows-style dialog box titled "Advanced Settings for COM4". It has a blue title bar with a question mark icon and a close button. The main area is light beige. At the top, there is a checked checkbox labeled "Use FIFO buffers (requires 16550 compatible UART)". Below this, there are two lines of text: "Select lower settings to correct connection problems." and "Select higher settings for faster performance." There are two sliders. The first is labeled "Receive Buffer: Low (1)" on the left and "High (14) (14)" on the right. The second is labeled "Transmit Buffer: Low (1)" on the left and "High (16) (16)" on the right. Both sliders have a green arrow pointing to the right, indicating they are set to the high value. On the right side of the dialog, there are three buttons: "OK", "Cancel", and "Defaults". At the bottom left, there is a label "COM Port Number:" followed by a dropdown menu showing "COM4".

Advanced Settings for COM4

☒ Use FIFO buffers (requires 16550 compatible UART)

Select lower settings to correct connection problems.

Select higher settings for faster performance.

Receive Buffer: Low (1) High (14) (14)

Transmit Buffer: Low (1) High (16) (16)

COM Port Number: COM4

OK
Cancel
Defaults