

Version 12.0 Release Notes

Cash Register Express & Restaurant Pro Express 12.0

Version 12.0, released on February 16th, 2009, includes over a dozen new and useful features! A few of the main highlights are enhanced credit card security, a new labor scheduler, an interface with security camera and DVR systems, ID scanning, and an internet-based web portal for chains.



PA-DSS — Security Release

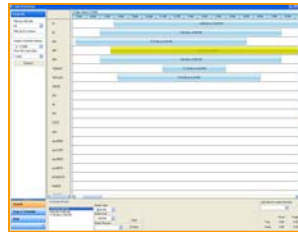
pcAmerica has achieved PA-DSS Compliance for both Cash Register Express and Restaurant Pro Express. PA-DSS (Payment Application Data Security Standards) is the highest level of certification available to conform with the PCI Council headed by Visa, MasterCard, American Express and Discover.

The four primary card issuers — Visa, MasterCard, American Express and Discover — require that all businesses that accept credit cards follow the PCI-DSS (Payment Card Industry—Data Security Standards) rules and regulations by October of 2009. PCI-DSS is a set of rules and regulations that your business is required to follow to ensure that credit card data is securely processed and managed. One of these requirements is that your business uses a software that is PA-DSS Compliant, such as CRE or RPE. pcAmerica is one of the first point of sale and payment application to complete this higher level of certification.

Trustwave is the third-party certified auditor that worked with pcAmerica to certify compliance of both Cash Register Express and Restaurant Pro Express.

Labor Scheduler

A new **labor scheduler** has been added to CRE & RPE, making it simple to schedule employees for work. The new simple interface makes it easier to schedule, and also offers a quick snapshot of how many employees are working, as well as what job roles they are working that day. Schedules can be printed for employees, as well as copied from previous weeks so they don't have to be recreated from scratch. A new **Labor**



Cost Percentage

Report has been added to help business owners make more informed decisions regarding how much labor to schedule, helping reduce costs.

Support for New Pin Pads, Debit, EBT



CRE and RPE now support additional pin pad entry devices with integrated signature capture capability. Debit functionality has been enhanced to allow for cash back, and customers can now pay by EBT for foodstampable products.



Security Camera \ DVR Integration

CRE and RPE now have integration with a DVR security camera system that records the actions around your store. As transactions are being rung up, CRE and RPE overlays the actual transaction on the screen in real time including items being rung up, discounts, no sales to open the cash drawer, payments, the full receipt and more.



RPE - Bar Tabs

RPE includes a new Bar Tab interface that allows bartenders to open a tab by swiping the customer's credit card. The credit card is pre-authorized to ensure its valid, and the customer's name from the card is automatically used as the name on the tab. This new system is faster and makes it much easier for bartenders to manage a list of open tabs.

Version 12.0 Release Notes

Cash Register Express & Restaurant Pro Express 12.0

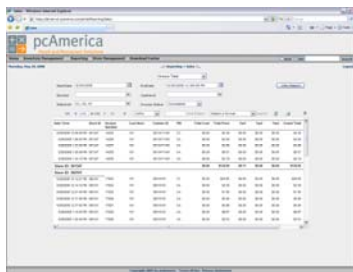
New Reports

The new version includes a few new reports to help business owners make smarter business decisions.

- **Labor Cost Percentage** report summarizes how much profit a business is making in comparison to labor dollars being spent
- **Customer Summary Report** summarizes total dollars spent by customers, enabling business owners to know who their best customers are and do something special for them
- **Credit Card Detail Report** details each credit, debit and EBT card purchase with the amount charged, total tip amount, card type and last four card digits which is a great tool to investigate past charges to clients

Web Portal for Chains

Chains of stores and restaurants can now use the pcAmerica Web Portal, an internet based system that allows users to run reports, change prices, create purchase orders and several other back office tasks from a web browser on any computer with internet access. Reports and back office functions can be modified for single stores, groups\regions of stores or all stores depending on the level of access the user has. The web portal is available as a hosted solution, where pcAmerica hosts the servers and manages the technology, or licensed for larger chains that manage their own servers. This is a perfect solution for chains that wish to able to monitor and manage their businesses remotely without having to adopt and manage complicated technology.



ID Verification and Data Entry

ID scanning has been introduced into CRE and RPE. For age-sensitive items such as liquor and tobacco, the POS can now be configured to verify the age of the customer before authorizing purchase in conjunction with a special Honeywell Bar Code Scanner. This is accomplished by scanning the bar code on the back of the license, at which point CRE and RPE will calculate the age and inform the cashier if the customer is old enough for the purchase. This is a great way to reduce the liability associated with selling these products to minors. The scanner can also be used to quickly and accurately capture customer information (such as name, address, birth date) by scanning the same license bar code.



Layaway

Cash Register Express now includes integrated layaway tracking, enabling your customers to leave a deposit for an item and make payments for it over time. Stock levels and customer payments are completely managed by the POS. Layaway is a very useful tool that is popular in clothing and jewelry stores.

Suggested Course Ordering

Suggested Course Ordering was added to Restaurant Pro Express. This new feature can be configured to prompt servers for drinks and appetizers for each guest at the beginning of every order. Servers often innocently forget to ring up drinks that they prepare themselves (such as sodas) and this enforces that the restaurant won't lose the income. It can also be used to reinforce servers to ask for an appetizer every order.

Version 12.0 Release Notes

Cash Register Express & Restaurant Pro Express 12.0

Other Updates

- All login attempts (both successful and unsuccessful) are logged in the Windows Event viewer, providing a greater level of audit tracking for your point of sale system.
- Direct interfaces added to process with Merchant Warehouse, First Data, Mercury Payment Systems, Chase PaymentTech, Moneris Canadian Credit\Debit. See faq.pcamerica.com for details.
- Table diagram screen in RPE now displays more tabs at one time
- Feature to print\suppress signature copy of credit card invoices under certain dollar amount
- Multi-site loyalty with a third party processor
- Added support for OPOS receipt printers, OPOS pole displays, OPOS MSR, OPOS Cash Drawers
- Added support for the Zebra LP2824 bar code printer
- Added ability to print Shelf Tags within Bar Code Express (for the Zebra LP2824 printer)
- Enhanced QuickBooks interface to be able to export within a date range. Also added extended QuickBooks interface features to the Enterprise Edition including syncing of purchase orders, employee time sheets, accounts receivable, and inventory stock levels
- Prompt Identifier feature added to prompt for a name or order number at the end of an RPE transaction, prints this on the receipt and on the kitchen printer or kitchen video system
- Line discounts can now have a reason code associated to them
- Official support of the VeriFone VX670 Pay at the Table device
- Feature added to delete all items that haven't sold within a given date range
- Enhanced DDR to include coupon totals
- Enhanced General Hourly Report to allow it to be run over a date range
- Enhanced Ingredient Theoretical Usage report to run for total ingredients used (current) by date, but now also the sum or average over a date range
- Enhanced end of day process can be used to confirm deposit amounts, and track shifts by station or cashier
- Cash pullouts can now be manually triggered any time during a shift, as opposed to previously which only allowed cash pullouts when the automatic cash level triggered
- New permissions: Access Labor Scheduler, Add Coupon Item, Global Pricing, Inventory Special Pricing
- Store associations added for employees, job codes and customers (for chains that want these per store \ store group as opposed to global)
- Employee permissions can now be set by job code, as opposed to before where they could only be configured individually.
- Purchase orders enhanced to allow users to record items that were received damaged. PO interface also allows multi-select of items for adding or deletion.
- Stock levels can no longer be modified by typing in the in stock field. Users must use one of the receiving features, such as purchase orders or Instant Purchase Orders to modify stock levels, providing a tighter audit trail
- Prompt Quantity feature enhanced and can be configured to have pre-set choices (such as half-dozen, dozen, etc.) which makes ringing up sales faster for these types of items.
- "Next" button in amount tendered screen that shows the next highest dollar amount

For more details on Cash Register Express and Restaurant Pro Express Version 12.0, as well as hundreds of other features, call your pcAmerica account manager