



pcAmerica
Retail and Restaurant Solutions



Restaurant Pro express
Point of Sale Solution for Restaurants



Cash Register express
Point of Sale Solution for Retail

v12.5
Software Release

New Features

- Redesigned Virtual Pole Display/Digital Signage/Pin Pad Interface
- E-mail Receipt and Purchase Orders
- PA-DSS/PCI Compliant POS Software
- Online Ordering Integration
- Fuel Pump Software Integration
- Combo Meal Feature
- Employee Labor Scheduler

Cash Register Express & Restaurant Pro Express 12.5

Version 12.5, released on September 13th, 2010, includes over forty new features and enhancements! At pcAmerica, we are committed to developing point of sale software applications that offer state-of-the-art features and functionality to meet the needs of today's progressive retailers and restaurateurs. To meet that need, our point of sale software engineers continually return to the field to learn from our customer's operations. This new release includes more features to raise sales, reduce costs, and boost efficiency.



Redesigned Virtual Pole Display, Digital Signage, and Pin Pad Interface

CRE and RPE includes an integrated digital signage feature that enables businesses to display eye-catching advertisements alongside current transaction information. This feature enables retailers and restaurateurs to display advertisements on a variety of point of sale peripherals including LCD pole displays, full size LCD displays, and pin pads. Advantages of digital signing include:

- Cutting down the cost of re-print materials for flyers, signage, or brochures
- Rapid ability to update content
- Ability to deliver specific messages to specific audiences in specific locations
- Generate revenue by selling advertisements to vendors/suppliers
- Promote sales items or impulse merchandise
- Replaces the traditional 2-line pole display with a display showing the last few items rung up on the transaction



E-mail Receipt and Purchase Orders

Version 12.5 of Restaurant Pro Express and Cash Register Express also features the ability to e-mail receipts to your customers, providing a "green" alternative to traditional printed receipts. Retailers and restaurateurs can also e-mail purchase orders to vendors. This new eco-friendly feature is ideal for businesses or customers that are looking for new and innovative ways to "go green."



PA-DSS/PCI Compliant POS Software

At pcAmerica, we take the security of customer card holder data seriously. Cash Register Express and Restaurant Pro Express were both certified as PA-DSS compliant in the previous release, Version 12.0. The four primary card issuers – Visa, MasterCard, American Express, and Discover – require that all businesses that accept credit cards follow the PCI-DSS rules and regulations. To meet ongoing requirements, our POS software now supports 3DES pin pad encryption which is required by the latest PCI standards.

Not using Version 12.0 or higher of Cash Register Express or Restaurant Pro Express point of sale software? Contact us to learn how to upgrade your POS system to meet PCI Compliance regulations.



pcAmerica
Retail and Restaurant Solutions



Restaurant Pro express
Point of Sale Solution for Restaurants



Cash Register express
Point of Sale Solution for Retail

v12.5
Software Release

Additional CRE Features

Retail Tip

Cash Register Express POS software now has the ability to add tips to retail transactions. This functionality is ideal for retail businesses that offer services that typically include tips.

Split Commissions

Cash Register Express POS introduces a new 'Split Commission' feature which allows commissions to be assigned to a salesperson by item. Previously, the software only allowed one salesperson to be assigned for an entire transaction.

Price Batches

Looking for an easy and effective way to change prices on multiple items at once? Our new Price Batch feature allows mass updating of prices based on a set schedule. It also allows you to select a list of items, departments, or items with specific properties to do global price change (sale price, bulk price, price change, etc.) to take effect at a certain date and time.

Inventory/PO Quick Receive Screen

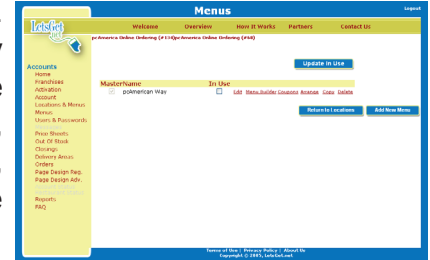
Available with Cash Register Express POS software, this enhanced feature streamlines the receiving process so your retail business can operate more efficiently.



Online Ordering Integration

Restaurant Pro Express Software now seamlessly integrates online ordering for restaurants. This simple to use online interface enables customers to order and pay online.

Their orders are automatically printed out in the kitchen. Scalable for any size business, this solution, growing in customer popularity, opens new avenues for the restaurant patrons to place orders.



Optional Fuel Pump Module

Cash Register Express software now offers an integrated fuel pump module. For an additional charge, Cash Register Express - Fuel Edition makes collecting payment for fuel sales easy by empowering cashiers to handle all fuel related functions from the comfort of their pcAmerica POS system. Cashiers can seamlessly control fuel pumps, fuel sales and other transactions from the same POS interface. Cash Register Express - Fuel Edition processes pre-paid and post-paid transactions, pay-at-the-pump, loyalty cards, fleet (gas) cards and car wash sales. Our solution is designed to dramatically increase customer throughput at the fuel pump without sacrificing POS system performance.



Self Ordering and Self Service Interface

Available with both CRE and RPE, a store or restaurant can now set up a terminal where customers can order their own food. Customers can either print a ticket and pay at the register or pay by credit card right at the terminal. This feature enables businesses in both retail (deli and convenience) and restaurant to benefit from online ordering by increasing customer engagement, encouraging higher customer spending, and reducing labor costs.



Combo Meal Feature

Available with Restaurant Pro Express software, this powerful feature provides additional order taking functionality for fast food and counter service restaurants by enabling them to take combination meal orders. This feature can walk the cashier through the process of taking a combo meal order. If items are rung up separately, our "Auto-Combo" feature will recognize this and automatically combine them together to give the customer the combo meal discount.



Employee Labor Scheduler

A new labor scheduler has been added to CRE and RPE, making it simple to schedule employees for work. The new interface makes it easier to schedule, and also offers a quick snapshot of how many employees are working, as well as what job roles they are working that day. Schedules can be printed for employees, or copied from previous weeks so they don't have to be recreated from scratch. A new Labor Cost Percentage Report has been added to help business owners make more informed decisions regarding how much labor to schedule, helping reduce costs.



Additional Upgraded Features

- Customer A/R history report – gives a history of all invoices, payments, and credits on a customer's account.
- Capability to add a one-touch hot button for the Flash Report.
- Customer information box is now visible even when the touch screen button menu is open.
- Line discounts are now displayed next to the item description in the RPE Order Grid.
- Bulk pricing levels are now displayed in the Price Check screen.
- Integrated to Quadrox POS Fusion DVR, which enables users to show the recorded video of an actual transaction by simply clicking a button in CRE or RPE facilities.
- Integrated with FreedomPay RFID Payment Technology, including capability for cashless transactions – great for stores and restaurants within corporate facilities.
- Introducing additional support for CAS scales to calculate sales amounts by ounces (only did pounds and kilograms previously).
- Support added to send mass e-mail through an SMTP mail server.
- General Hourly Report enhancements include display to screen, export to excel, and order type prompt for restaurants.
- Kitchen printing option added where in addition to printing one kitchen parent receipt for everything, it can also break it down and print each item individually. This is very useful in restaurants, where the head chef can easily delegate out individual items to other personnel.
- New employee permission added – previously we had a blanket “price change” permission, we now have a specific permission that applies to “negative price changes” (changing something to a negative dollar amount). This introduces yet more flexibility in the business security policy.
- Bulk pricing (1 for \$5, 3 for \$10) could previously be set only by dollar amount. Now they can be set by percentage as well.
- Customer accounts can now have a picture associated with them.
- A restaurant can now withhold a credit card service fee from employees as part of their shift.
- We now support OPOS for MSRs, pole displays, receipt printers, and cash drawers. To view a comprehensive list of supported devices, visit <http://faq.pcamerica.com>.

Other Features and Updates in Version 12.5

- ID logging – enhanced age verification system for additional logs. Also allows you to print out a form if ID is damaged. Can also be enabled/disabled to keep a more detailed log of the verified data.
- Retail line discount reason codes (prompt for a reason why you are doing a discount).
- Expanded overtime options for our Time and Attendance functionality.
- Integration with Avery Berkel MX100 Scale software. Ability to communicate with the scale to send price updates so you don't program them separately.
- In-store synchronization redundancy between stations, requires Microsoft SQL Server Standard Edition or above.
- First Data Nashville ECA Check Processing.
- FDMS / Nashville processing support.
- Global Payments Transport Gateway support.
- Chase Paymentech Restaurant Tips and Gift Card integration.
- First Data Buypass integration.
- Fifth Third processing integration.
- Fuel Fleet card support via FDMS Buypass integration with FMS buypass.