

# Keyboard Emulation for the Elo Barcode Scanner

By Jason Ford  
Applications Engineering  
  
Elo TouchSystems  
A division of Tyco Electronics  
  
February 06, 2009

## 1. Introduction

The CygUSB71XInstall utility installs a service that runs in the background to provide a 'keyboard-wedge' like function. The service will pass any scanned data from the USB7210 to the current open application. The operation is similar to Windows Serial Keys function; however, unlike Serial Keys, Com Ports higher than Com 4 can be used.

Note: This utility must be installed after the Elo Barcode Scanner has been connected and the standard driver software installed. Please see the documentation that came with your Elo Barcode Scanner to install the standard driver software.

## 2. Basic Operation

1. If not already installed, install Elo Barcode Scanner driver.
2. Install the Elo Barcode Scanner to the TouchComputer following the guide that came with the Barcode Scanner
3. Use the setup.exe file provided with the Elo Barcode Scanner to install the CygUSB71XDemo program.

Note: This installation requires Microsoft .NET Framework 3.5 SP1. The system will prompt to install it from the web if needed. The installation of .NET may take several minutes.

4. Reboot the PC after install is complete. After reboot, the CygUSB71XDemo program will start automatically and allow configuration (after the configuration is saved, the program will thereafter start automatically with the saved configuration).

5. To configure, select the **Com Port** pull-down menu to select the serial port that has been assigned to the USB7210.

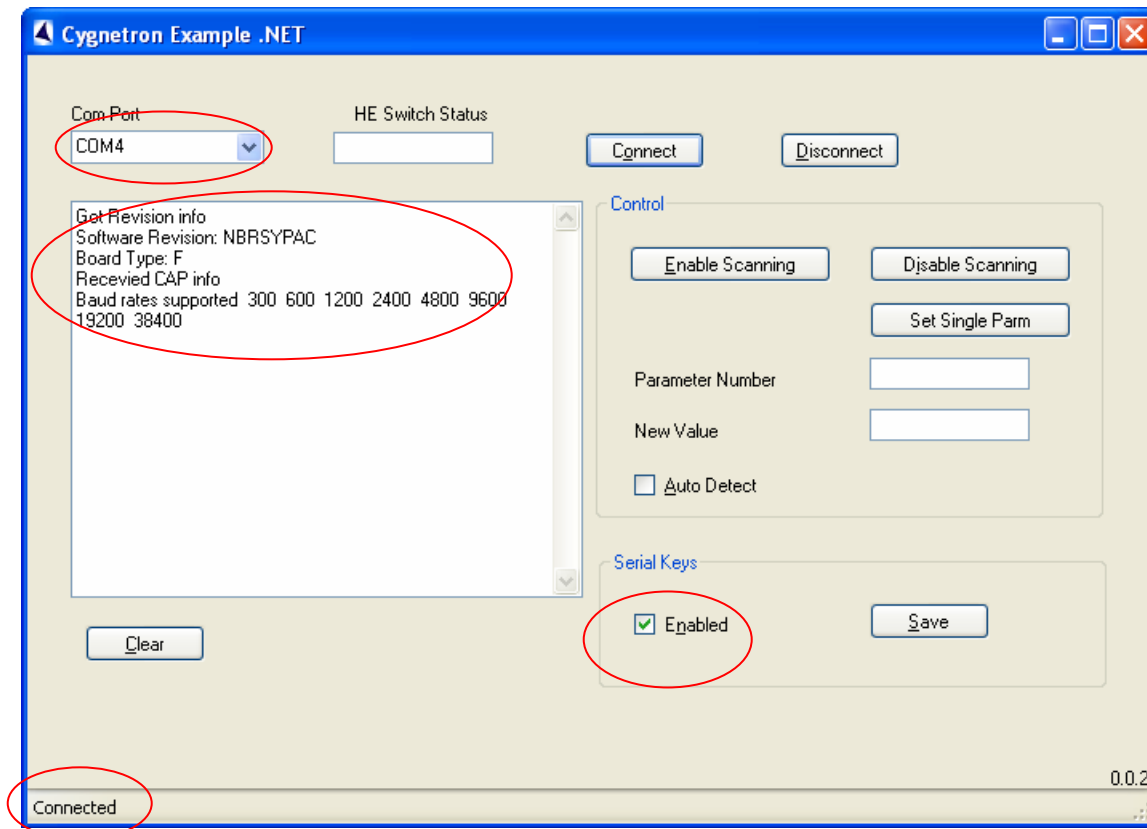
Note: You can determine this from “Ports and LPT” in the Windows Device Manager.

6. Select the **Enabled** check box from the *Serial Keys* section to activate the ‘keyboard wedge’ function.

7. Select the **Auto Detect** check box from the *Control* section. The *HE Switch Status* text box will now display information.

8. After configuration is complete, click **Save**.

9. Select the Connect button. The status bar in the lower left hand corner will display “Attempting Connection.” Once the version information is retrieved from the scanner, the capabilities commands are set and displayed in the message window. The Status bar will show *Connected*. See below.



10. Once connected, the application can be minimized (will move to the System Tray).

11. Double clicking on the Cygnetron icon in the system tray will bring the application up and configuration changes can be made.

Note: Click the **Disconnect** button before making any configuration changes. After changes are made, click the **Save** button, then **Connect**.

12. The data scanned by the barcode scanner will be sent to any active application (i.e. Notepad, Excel, etc.) if the Serial Keys Enabled checkbox is checked.

Note: If an application is active but not in focus, data will be sent to the application in focus.

Tyco Electronics reserves the right to change or update, without notice, any information contained herein; to change, without notice, the design, construction, materials, processing or specifications of any products; and to discontinue or limit production or distribution of any products.

Elo TouchSystems, TE Logo, and Tyco Electronics are trademarks.  
Copyright 2009 Tyco Electronics Corporation